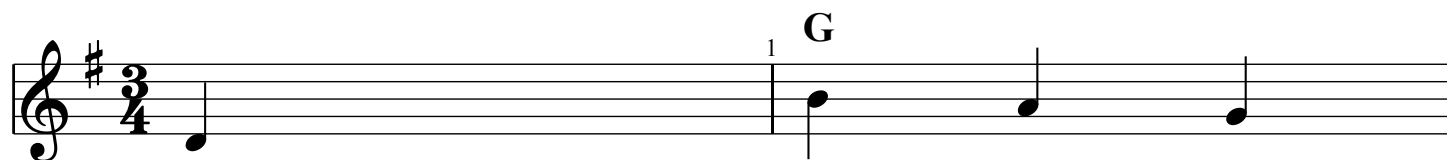
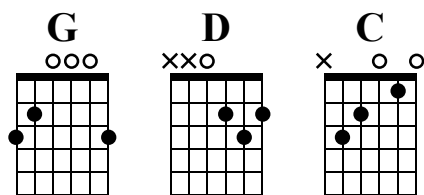


My Bonnie (Lies Over The Ocean)

Tabbed by Magnus Martin

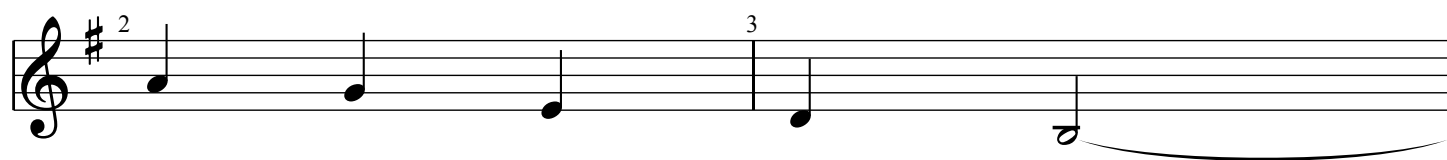


G

Bon-
night,
winds

nie
as
have

lies
I
gone

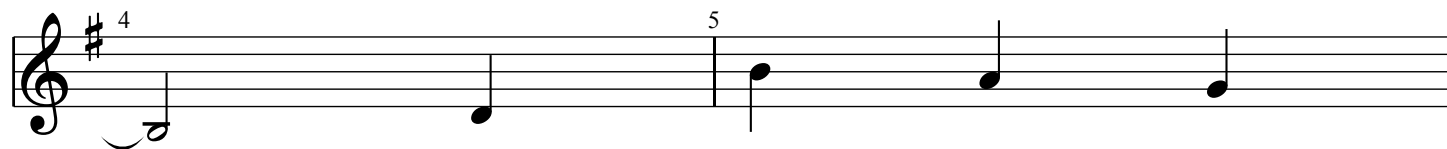


ver
on
ver

the
my
the

o-
pil-
o-

cean
low
cean

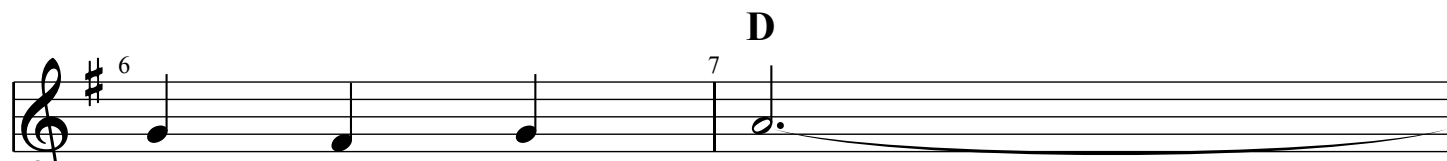


my
last
the

Bon-
night,
winds

nie
as
have

lies
I
gone



ver
on
ver

the
my
the

sea
bed
sea

D



my
last
the

Bon-
night,
winds

nie
as
have

lies
I
gone

G

10 11

o- lay o- ver on ver the my the o- pil- o- cean low cean

12 13 C

—, oh, bring back my
—, I dreamed that my
—, and brought back my

D G

14 15

Bon- nie to me
Bon- nie was dead
Bon- nie to me

Refrain G

16 17

—.
—.
—.

Bring

18 19 C

back, bring

D

20 21

back, oh, bring back my

22 23 **G**

Bon- nie to me, to

This musical staff contains measures 22 and 23. Measure 22 has a treble clef, a key signature of one sharp (F#), and a common time signature. It contains four quarter notes: B4, D5, E5, and F#5. Measure 23 contains two quarter notes: G5 and A5. The lyrics "Bon- nie to me, to" are written below the notes.

24 25

me. Bring

This musical staff contains measures 24 and 25. Measure 24 has a treble clef, a key signature of one sharp (F#), and a common time signature. It contains a dotted half note: B4. Measure 25 contains a dotted half note: D5. The lyrics "me. Bring" are written below the notes.

26 27 **C**

back, bring

This musical staff contains measures 26 and 27. Measure 26 has a treble clef, a key signature of one sharp (F#), and a common time signature. It contains a dotted half note: B4. Measure 27 contains a dotted half note: D5. The lyrics "back, bring" are written below the notes.

28 29 **D**

back, oh, bring back my

This musical staff contains measures 28 and 29. Measure 28 has a treble clef, a key signature of one sharp (F#), and a common time signature. It contains four quarter notes: B4, D5, E5, and F#5. Measure 29 contains four quarter notes: G5, A5, B5, and C6. The lyrics "back, oh, bring back my" are written below the notes.

30 31 **G**

Bon- nie to me.

This musical staff contains measures 30 and 31. Measure 30 has a treble clef, a key signature of one sharp (F#), and a common time signature. It contains four quarter notes: B4, D5, E5, and F#5. Measure 31 contains two quarter notes: G5 and A5. The lyrics "Bon- nie to me." are written below the notes.